



inag
I T A L I A

MOVING
SOLUTION

RENTAL

NOLEGGIO | VERMIETUNG

MC 180S



Elektrica - radiocomandata
Electric - radio controlled
Elektrisch - Funkgesteuert



Massima capacità
Max capacity
Maximale Kapazität
18.000 Kg



Dimensioni mm
Dimensions mm
Maße mm
4535x1990x2000



96V 1035Ah - 8 ore di autonomia
96V 1035 Ah - 8 hours of autonomy
96V 1035 Ah - 8 Stunden Autonomie

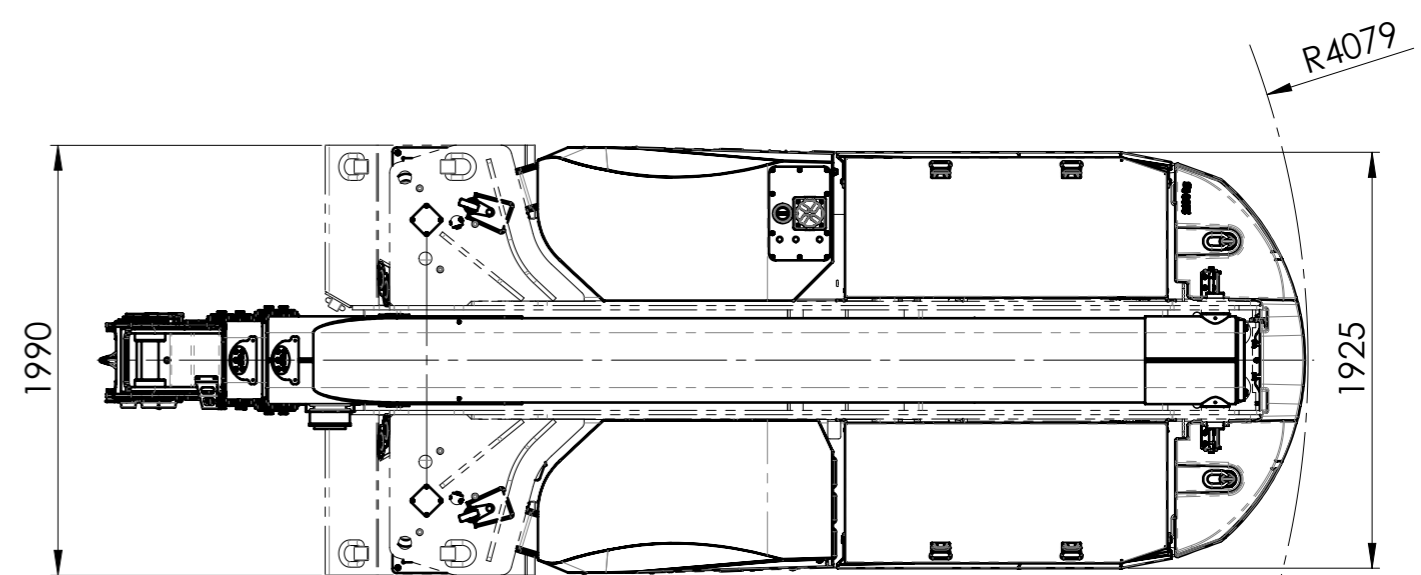
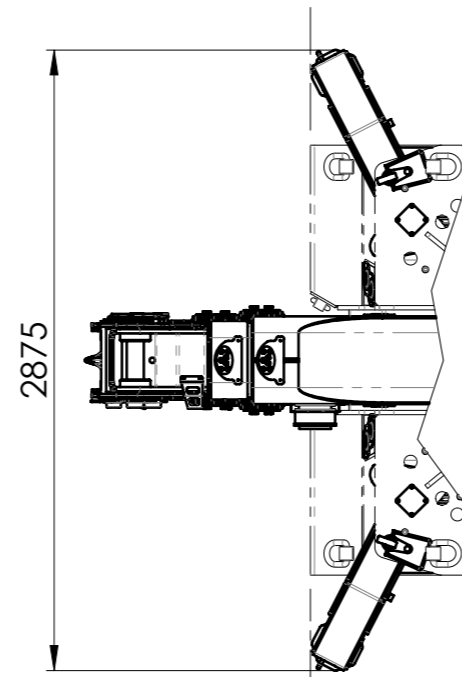
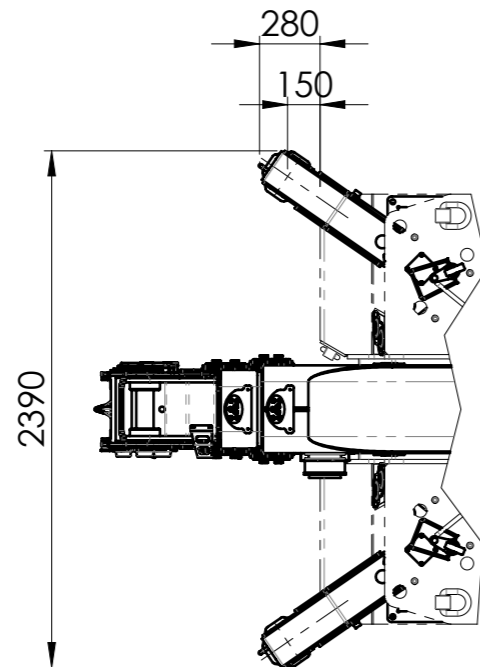
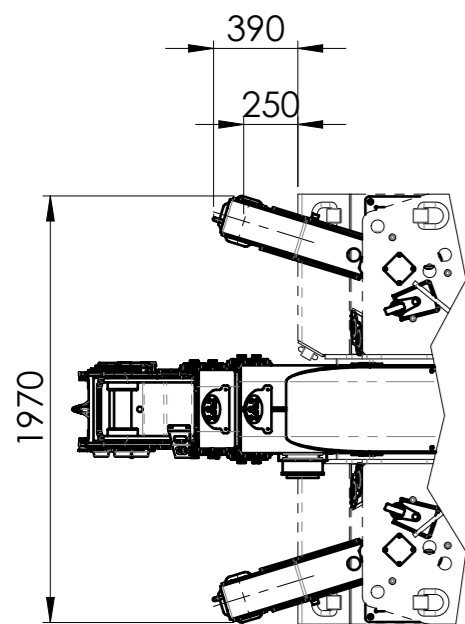
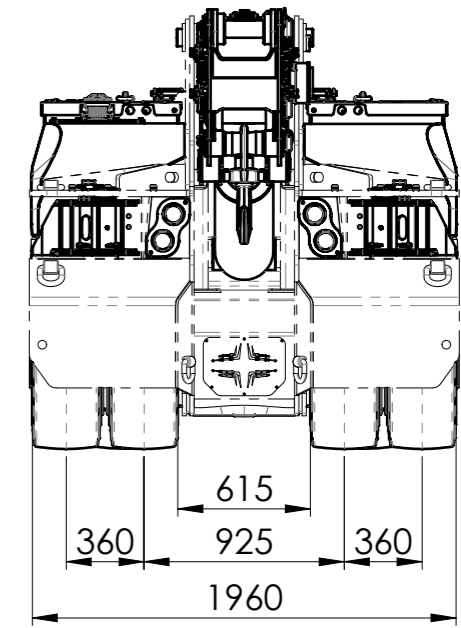
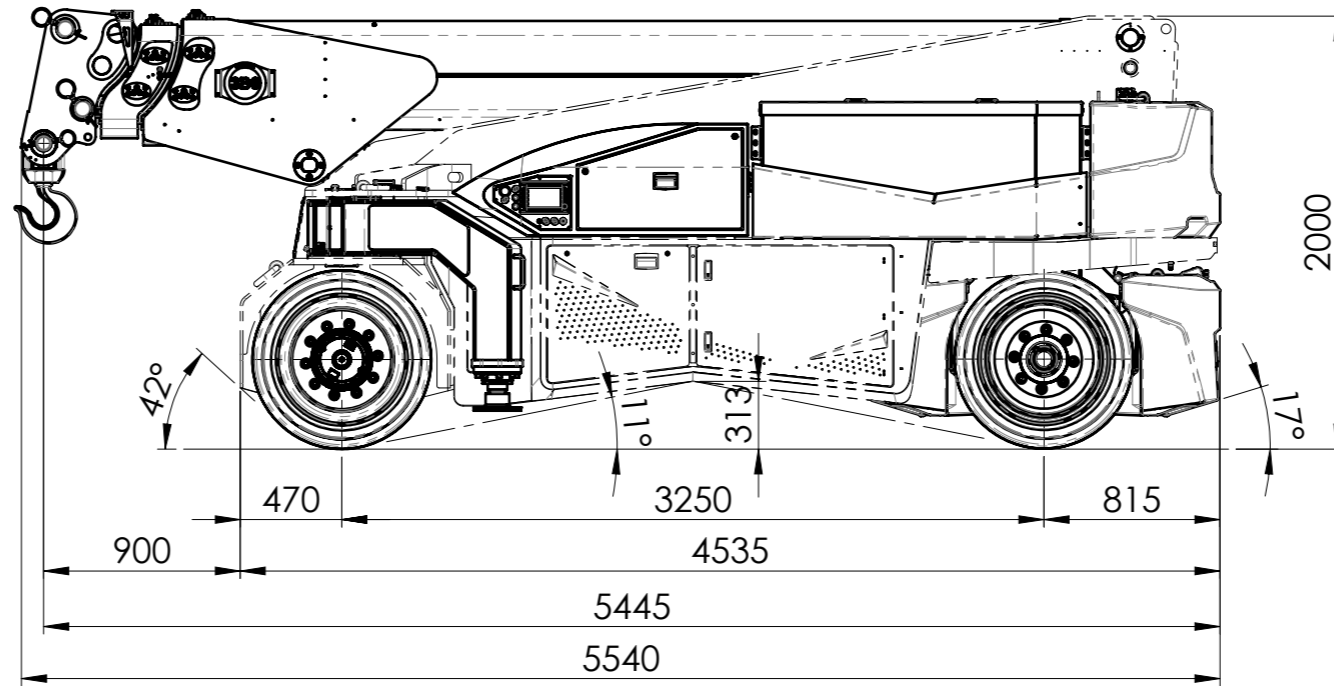
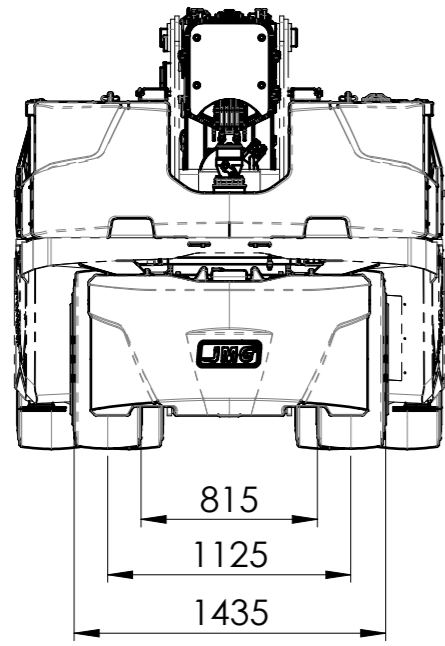


Angolo di inclinazione +65°/-6°
Angle of inclination +65°/-6°
Neigungswinkel +65°/-6°



Motore elettrico N°2 23kW- 96 V AC,
16 kW - Classe d'isolamento H
Electric motor N°2 23kW- 96 V AC, 16
kW - Insulation class H
N°2 23kW- 96 V AC, 16 kW Elektromo-
tor - Isolationsklasse H






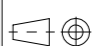
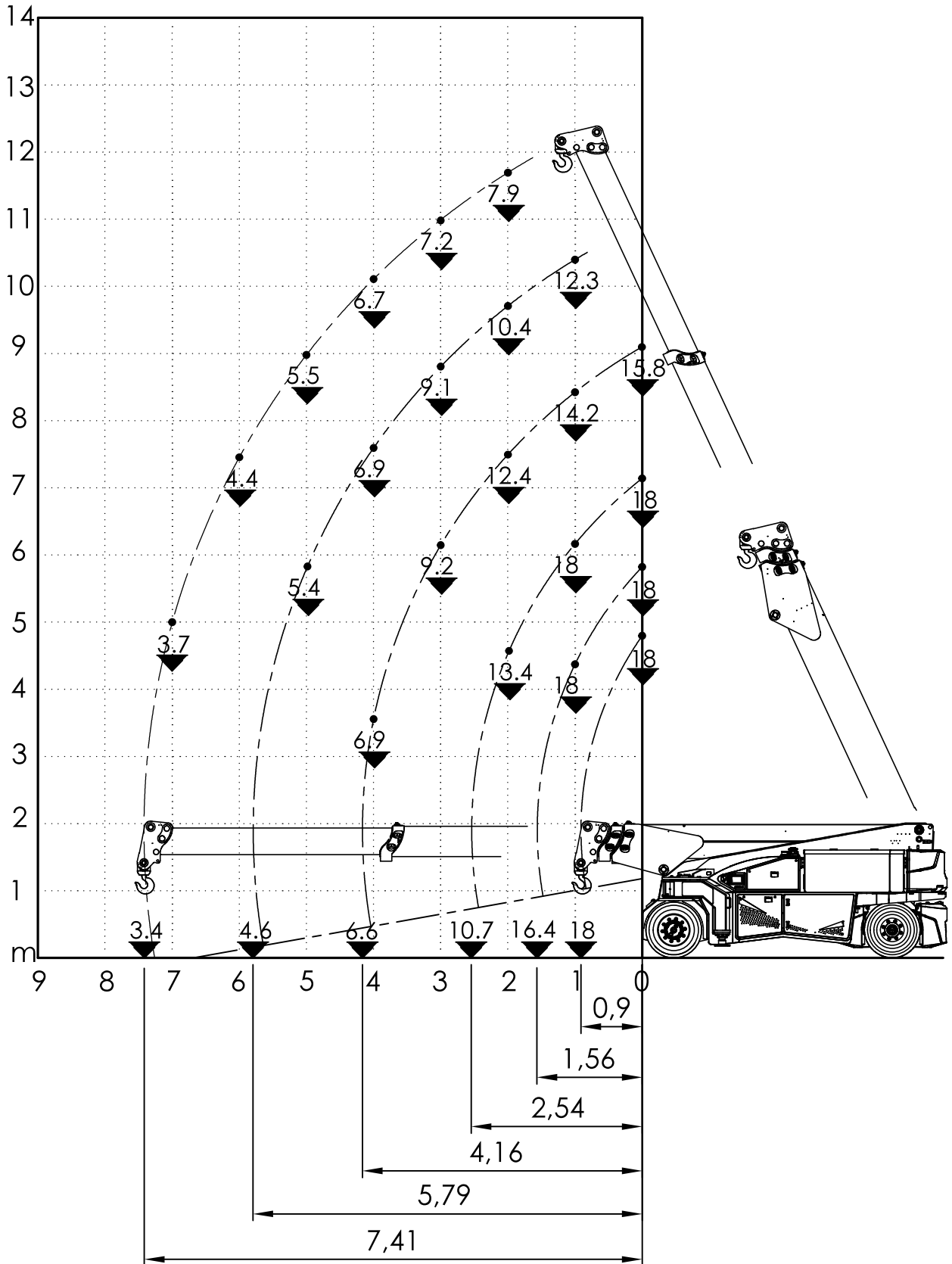
| | | | |
|--|----------------------|--|------------------|
| REVISIONE | DESCRIZIONE MODIFICA | APPROVATA DA | APPROVATA DATA |
| 00 | EMISSIONE | Andrea Prazzoli | 09/01/2019 |
| CODICE 000-COM-00502 | | REVISIONE 00 | FOGLIO 1 di 1 |
| DESCRIZIONE MC 180S | | SCALA 1:35 | MASSA (kg) 20900 |
|  Tolleranze generali secondo UNI EN 22768-mK RUGOSITA' Ra in µm 12.5 / (3.2 / 0.8 / 0.4) | | SALDATURA DOVE NON INDICATO ESEGUIRE LE SALDATURE A FILO CONTINUO MAG SOTTO PROTEZIONE GASSOSA, TIPO SCHUTZGAS FILO TIPO ESC C5-3 DIN 8559. LE SALDATURE NON INDICATE DEVONO ESSERE ESEGUITE COL MINIMO DI SPESSORE PARI AL METALLO BASE. | TRATTAMENTO |
|  DATA 07/05/2018 FIRMA Andrea Prazzoli | | DESSIGNATO DA 07/05/2018 APPROVATO DA 09/01/2019 Andrea Prazzoli Andrea Prazzoli | |

DIAGRAMMA DELLE PORTATE (t)
 CAPACITY DIAGRAM (t)
 TRAGLASTDIAGRAMM (t)
 LASTENDIAGRAM (t)
 TABLEAU DES CHARGES (t)
 DIAGRAMA DE LAS CARGAS (t)

JMG



MC 180S

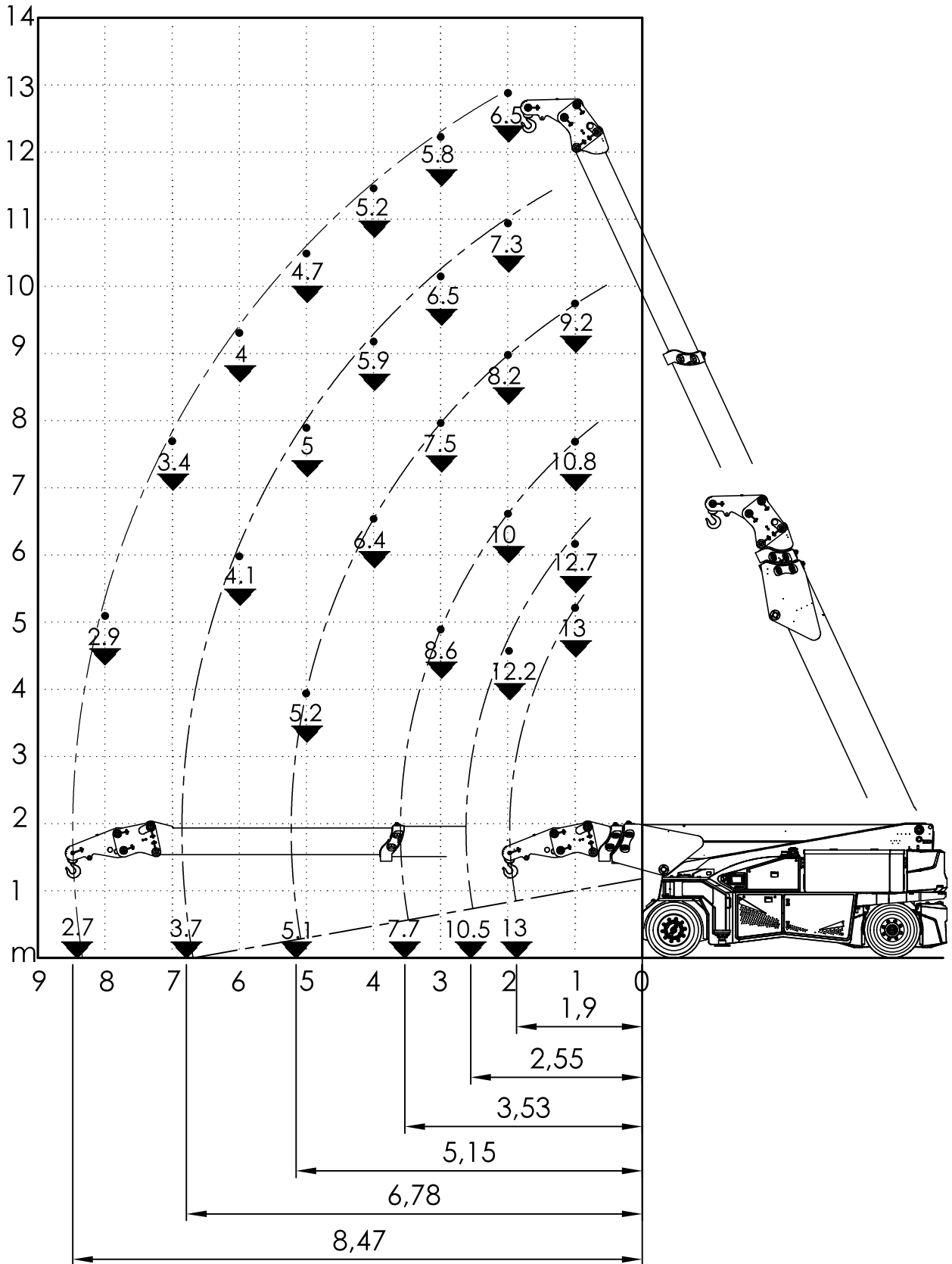
Z1+Z2+Z3

Cod.: 090-DIA-03744

Scala: 1:85

DIAGRAMMA DELLE PORTATE (t)
 CAPACITY DIAGRAM (t)
 TRAGLASTDIAGRAMM (t)
 LASTENDIAGRAM (t)
 TABLEAU DES CHARGES (t)
 DIAGRAMA DE LAS CARGAS (t)

JMG



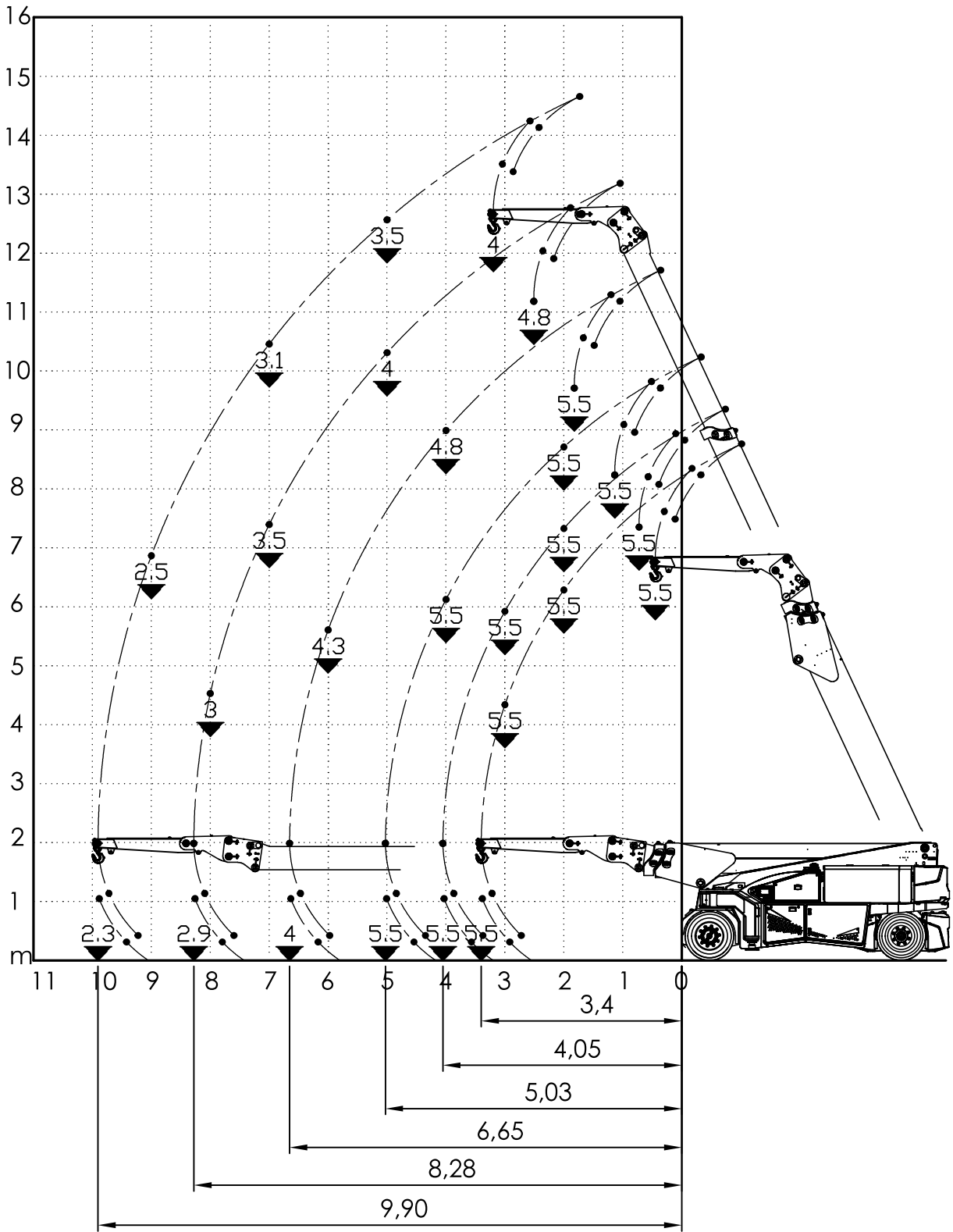
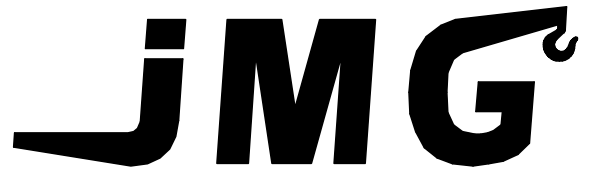
MC 180S

Z1-Z2-Z3_Jib13t

Cod.: 090-DIA-03753

Scala: 1:85

DIAGRAMMA DELLE PORTATE (t)
 CAPACITY DIAGRAM (t)
 TRAGLASTDIAGRAMM (t)
 LASTENDIAGRAM (t)
 TABLEAU DES CHARGES (t)
 DIAGRAMA DE LAS CARGAS (t)



MC 180S

Z1+Z2+Z3

Cod.: 090-DIA-04141

Scala: 1:100